

*Introducing the Organ,  
King of Instruments*





**TO START, PRESS ANY KEY**

# A GUIDE TO THE ORGAN

© 1987

LITTLE ROOM  
WHERE  
ORGANIST  
LIVES  
DURING  
THE REST  
OF THE  
SERVICE

SMOKE STACKS

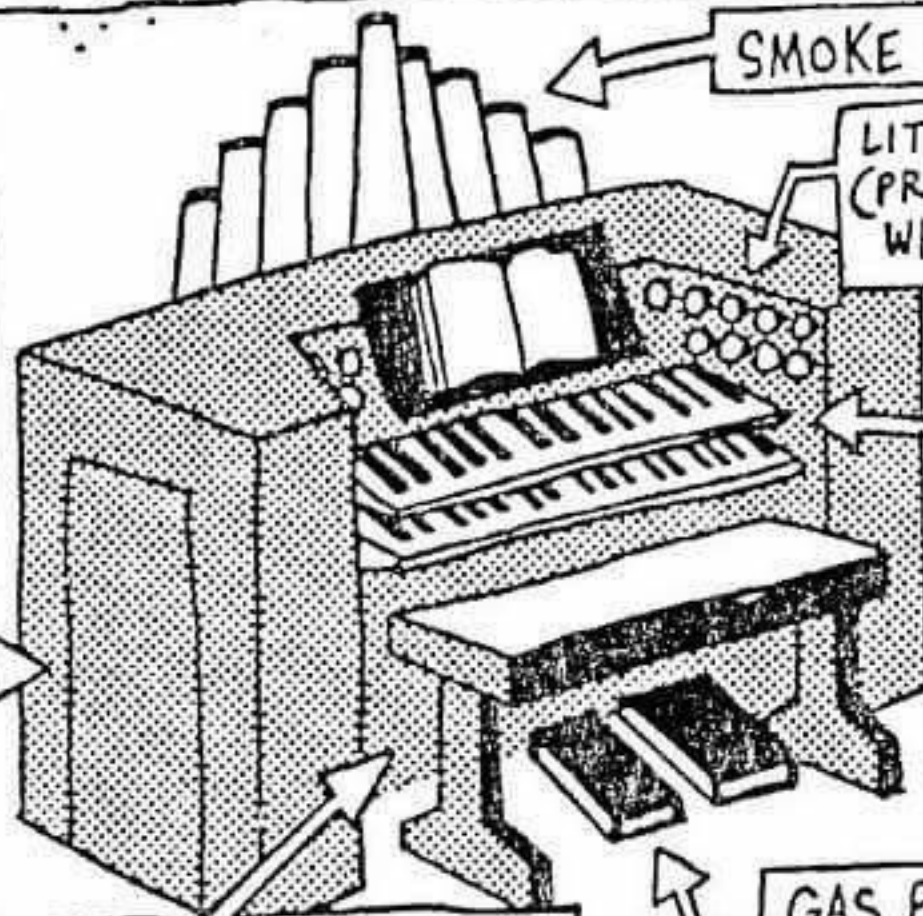
LITTLE BUTTONS  
(PRESS ONE, SEE  
WHAT HAPPENS)

2 KEYBOARDS  
(IN CASE  
ONE BREAKS)

WIDE BENCH  
(HOLDS ORGANIST & 2 PASSENGERS)

GAS PEDAL,  
BRAKE

MANUFACTURED BY CORY-EDWARDS





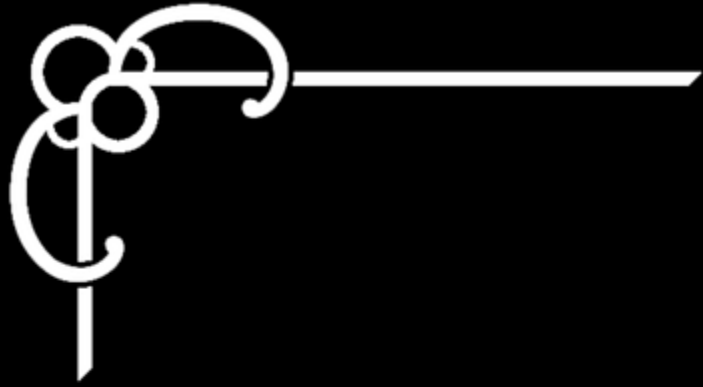
Mom, is there really such a thing  
as a perfect man?

Of course, dear.  
They're called  
Organists!



**Trust me**

**I'm an organist**



*It can't be ALL that hard!*



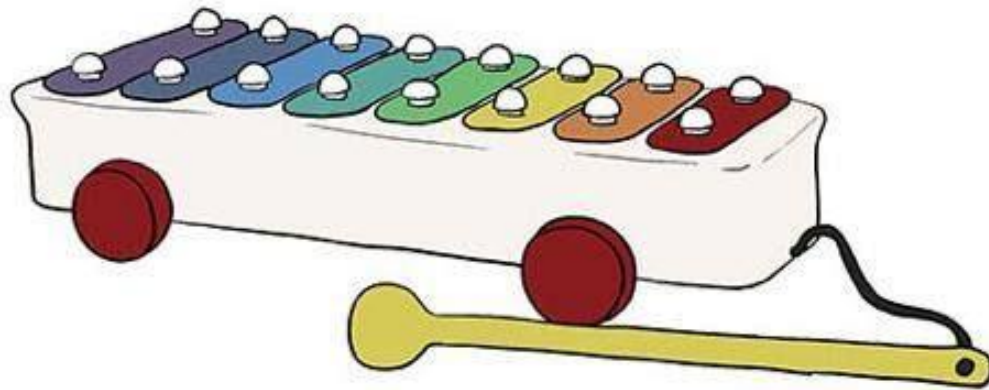


"I always forget whether I'm flying  
a 747 or playing an organ."



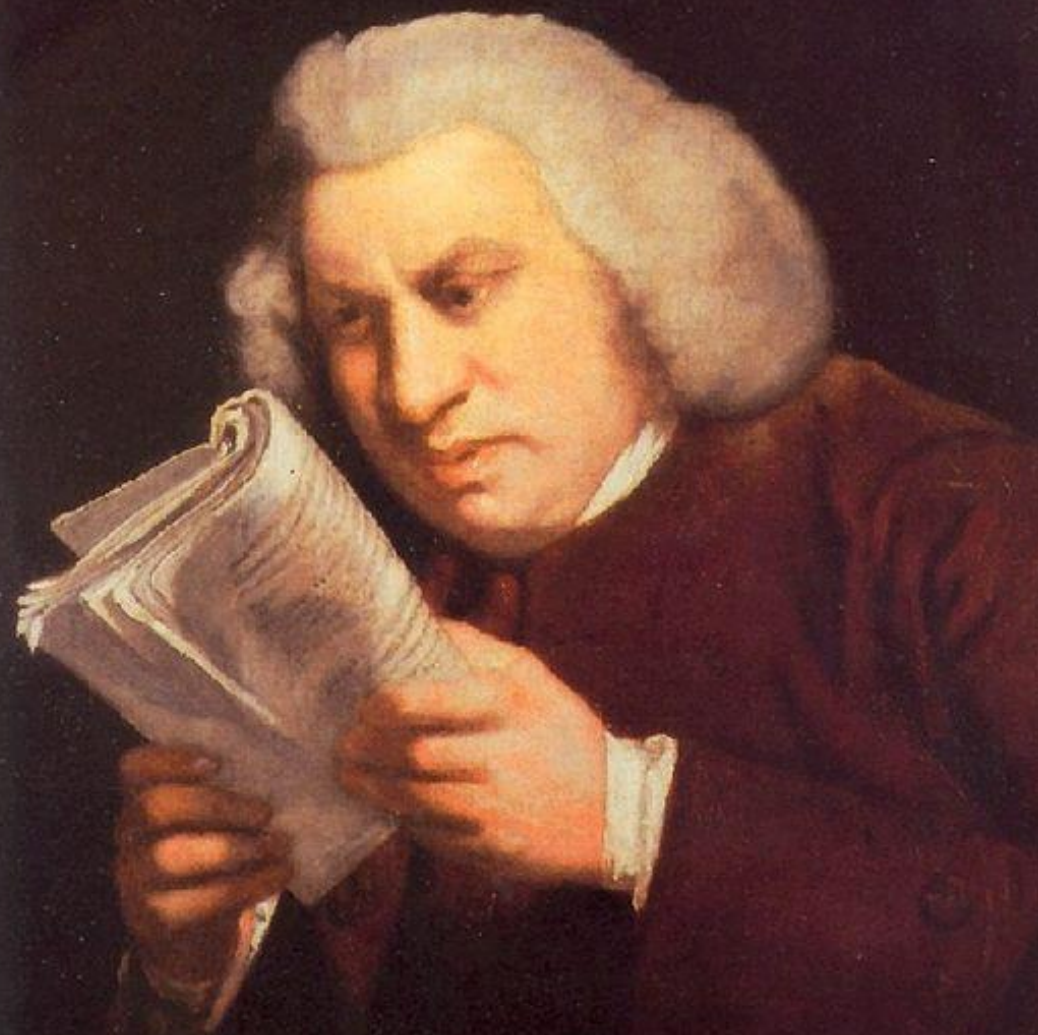


HOW AN ORGANIST  
SEES AN ORGAN



HOW EVERYBODY ELSE  
SEES AN ORGAN





**I AM TO PLAY HOW  
MANY STAVES?!**





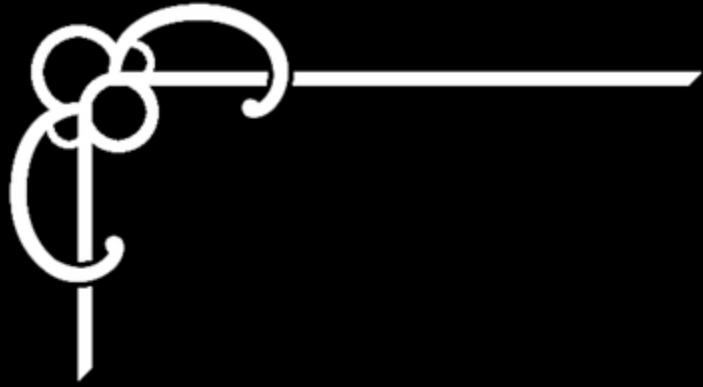
If an organist can remember every  
key, tab, button, drawknob, pedal  
AND toe stud,

You too can use  
the turn signal lever



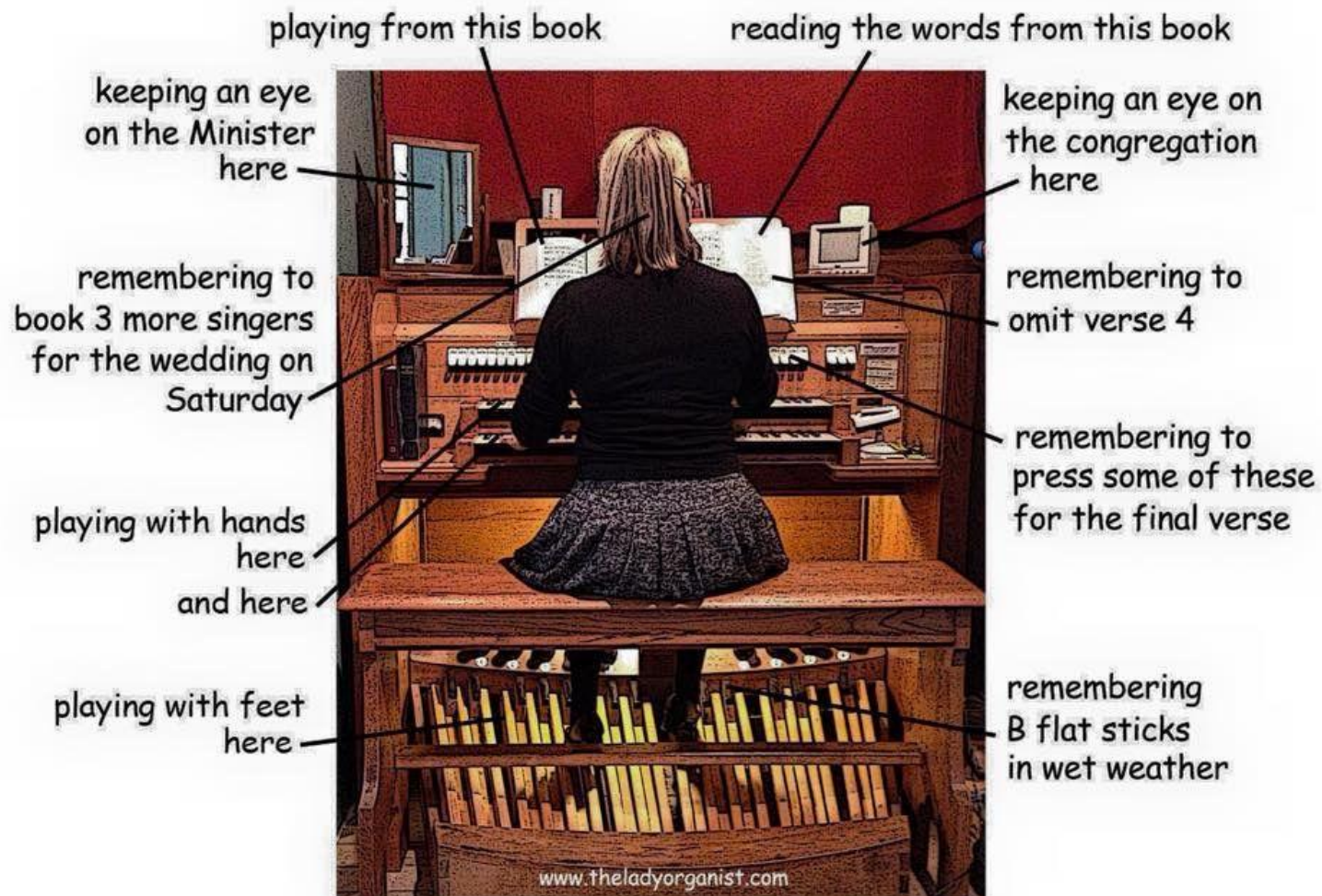






*Adventures in Church Music*





## THE CHURCH ORGANIST

Her: He's probably thinking  
about other women...

Him: did I accidentally save over  
my pistons for the postlude?







classicfm



When you can't find a page turner:





prelude

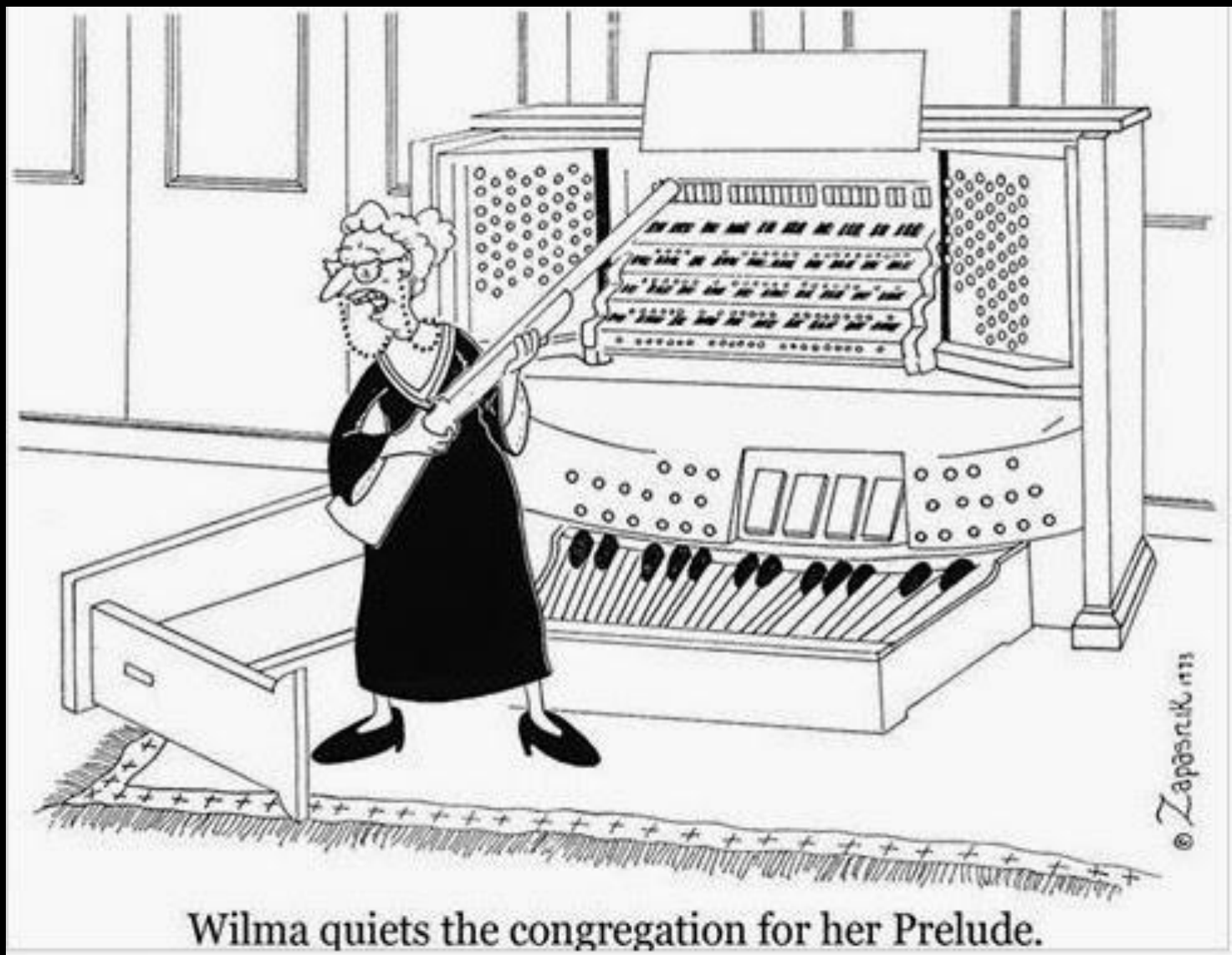


*opening  
voluntary*

**HOW YOU IMAGINE  
YOUR PRELUDE WILL BE**



**HOW IT IS**



Wilma quiets the congregation for her Prelude.



**PLEASE BE COURTEOUS  
DURING ORGAN PRELUDE**



**REFRAIN FROM TEXTING  
UNTIL SERMON BEGINS**

**OH, THE CONGREGATION DOESN'T KNOW  
THAT HYMN?**

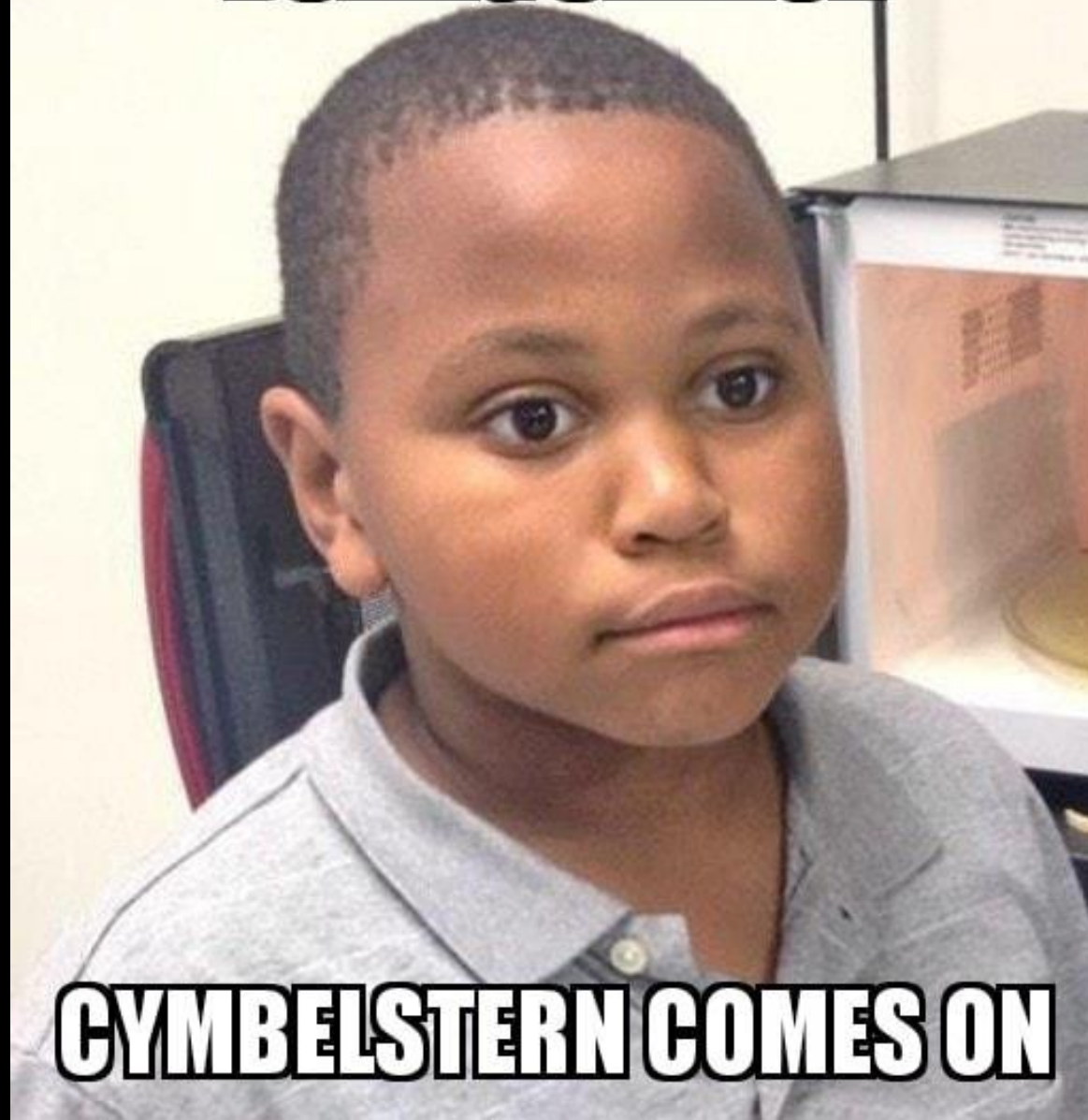
**LET ME SEE IF THERE'S SOMETHING I CAN DO**



when you hit a blank  
piston and save yourself  
with the crescendo pedal



**CHECKING PISTONS  
DURING SERMON**

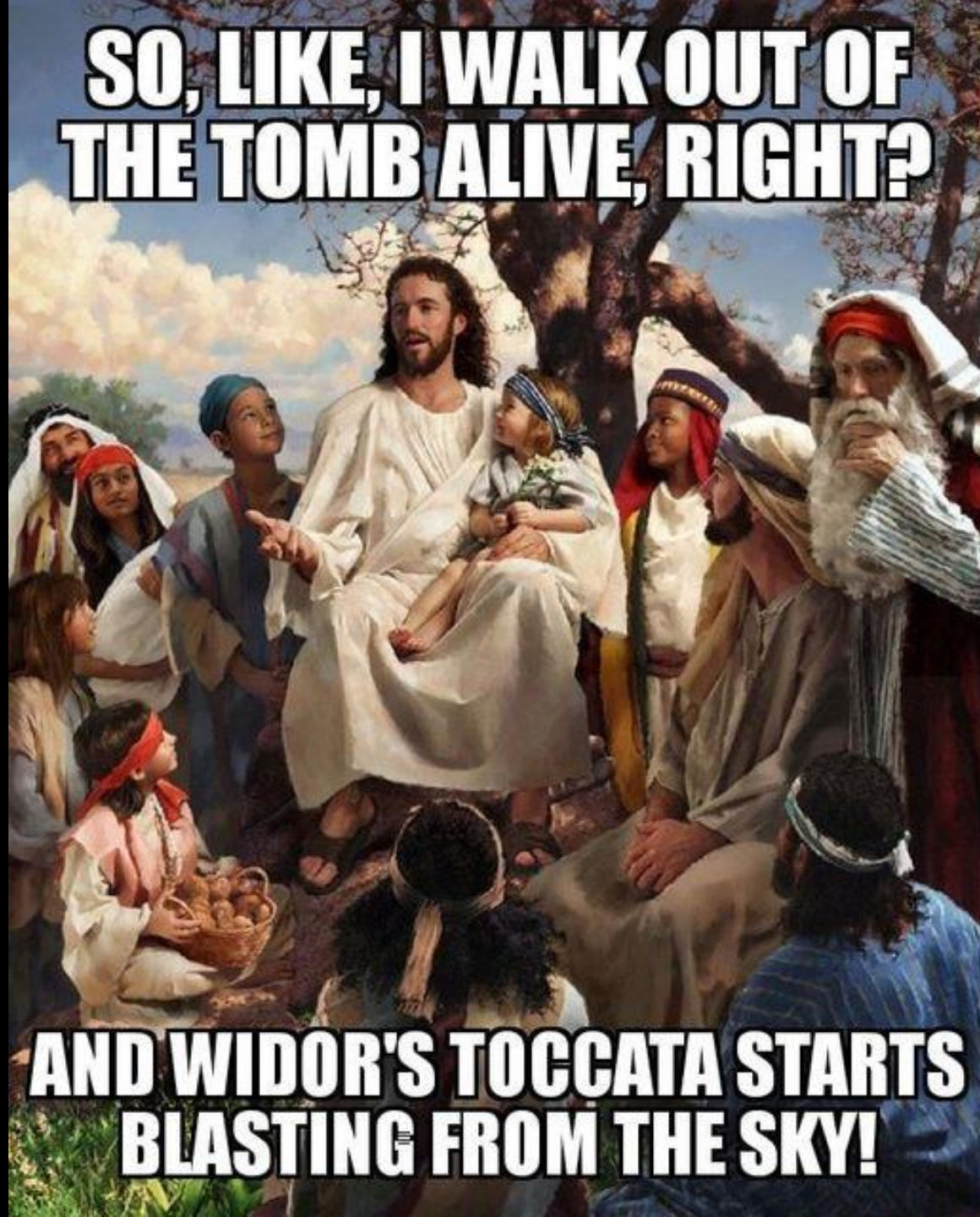


**CYMBELSTERN COMES ON**



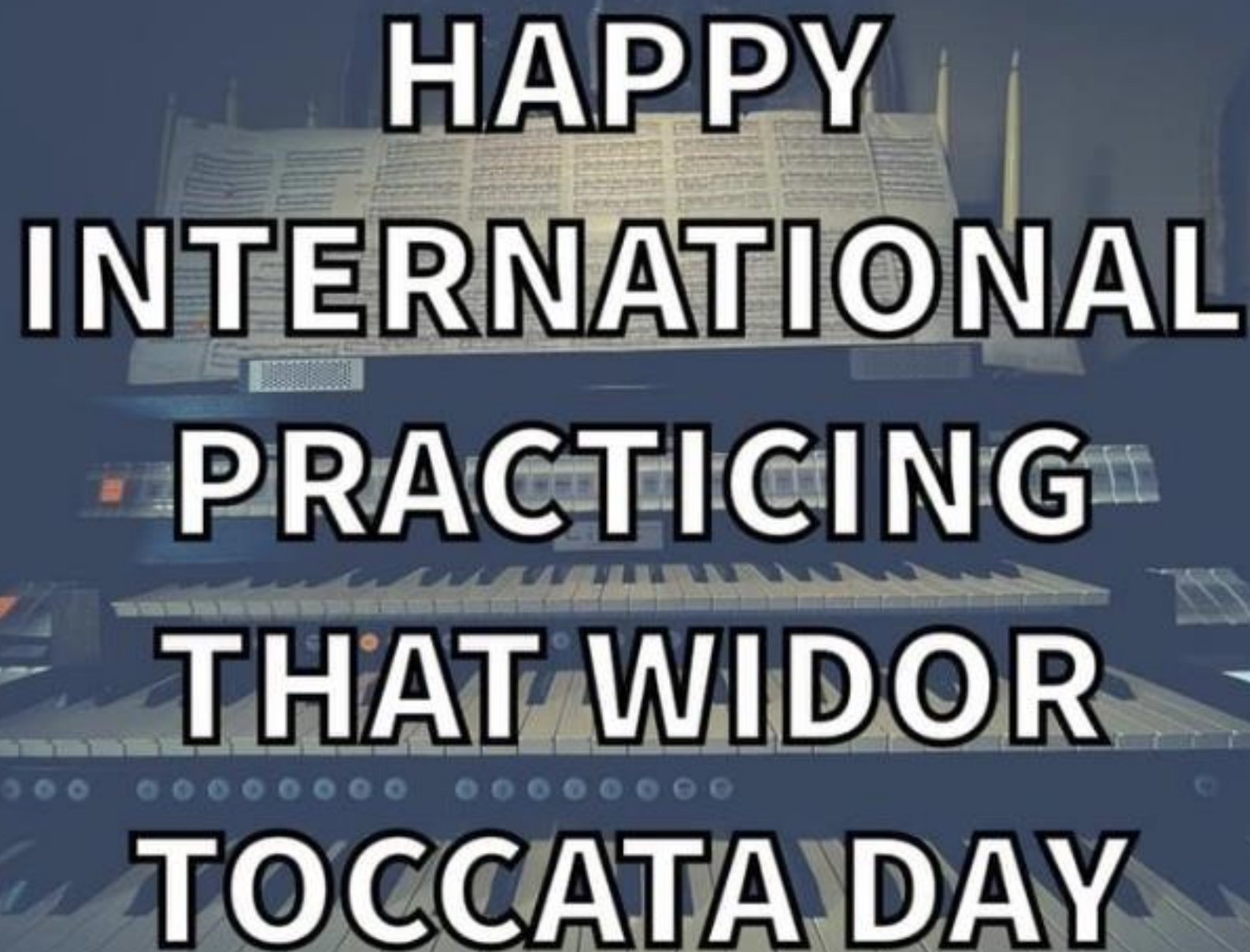


**SO, LIKE, I WALK OUT OF  
THE TOMB ALIVE, RIGHT?**

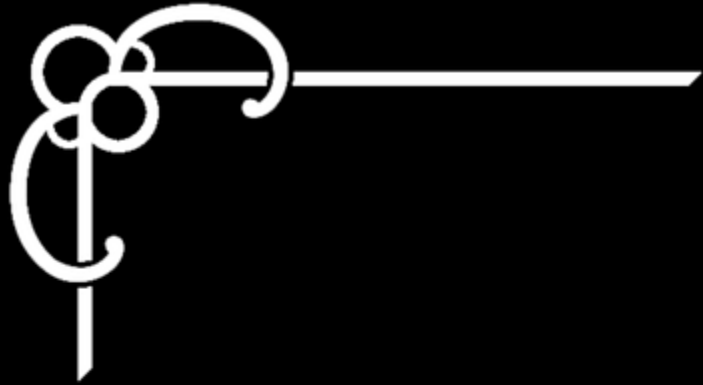


**AND WIDOR'S TOCCATA STARTS  
BLASTING FROM THE SKY!**





**HAPPY  
INTERNATIONAL  
PRACTICING  
THAT WIDOR  
TOCCATA DAY**



*Know Your Organ Stops*





PEDAL

SWELL

Overzealous  
Pedal Solo  
4

Fog  
Machine

Kazoo  
4

Hell's Bells

Shofar  
8

Disco Ball

Trumpet  
♂

Hot Boys  
8

Assault  
Rifle  
16

Omelette  
8

Flatulent  
16

• SWELL •

FASTFORWARD  
SERMON

MUTE  
PASTOR

MUTE  
PRAISE  
BAND

SILENCE  
PARISHONERS'  
CELL PHONES

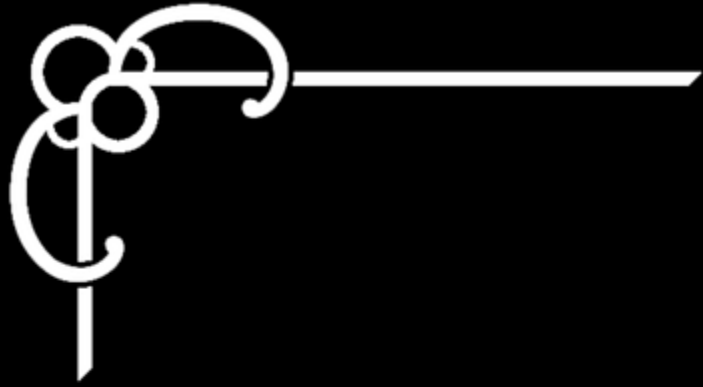
DISPOSE OF  
OFF-KEY  
CHORISTER

DISPOSE OF  
COMPLAINER:  
"TOO FAST"

DISPOSE OF  
COMPLAINER:  
"TOO LOUD"

SPOTLIGHT  
ON  
ORGANIST

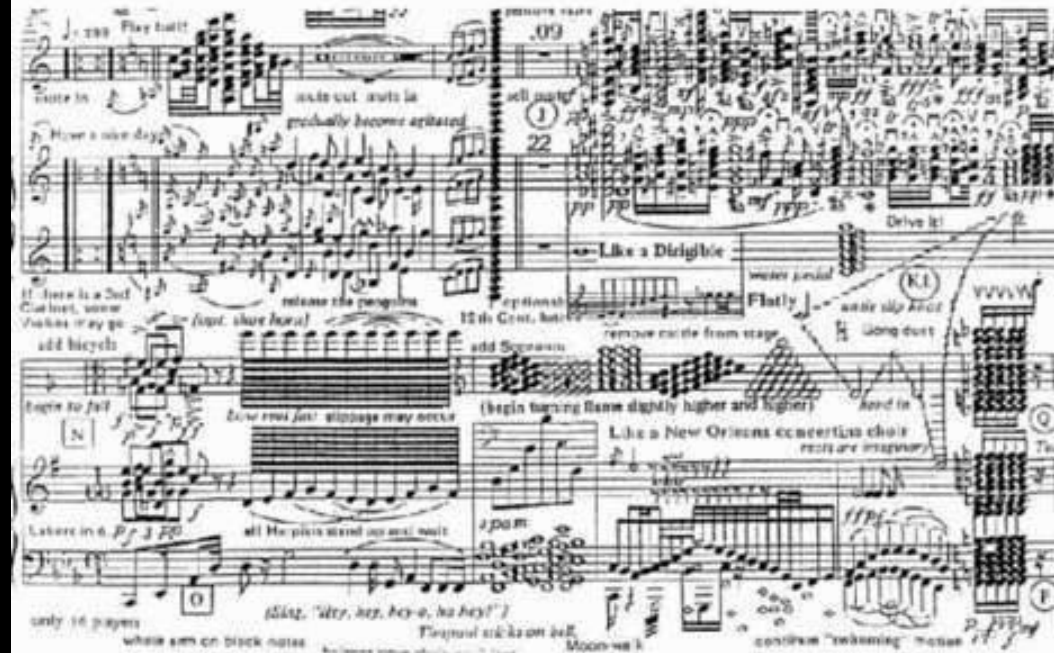
ACTIVATE  
HYDRAULIC  
ORGAN  
CONSOLE LIFT



*I really should be practicing . . .*



## HOW THE SHEET LOOKS WHEN YOU'RE SIGHT READING:



## HOW IT LOOKS AFTER YOU'VE PRACTICED:







★ I DON'T MAKE ★  
MISTAKES WHEN PLAYING  
**ORGAN**  
I MAKE SPONTANEOUS  
CREATIVE DECISIONS



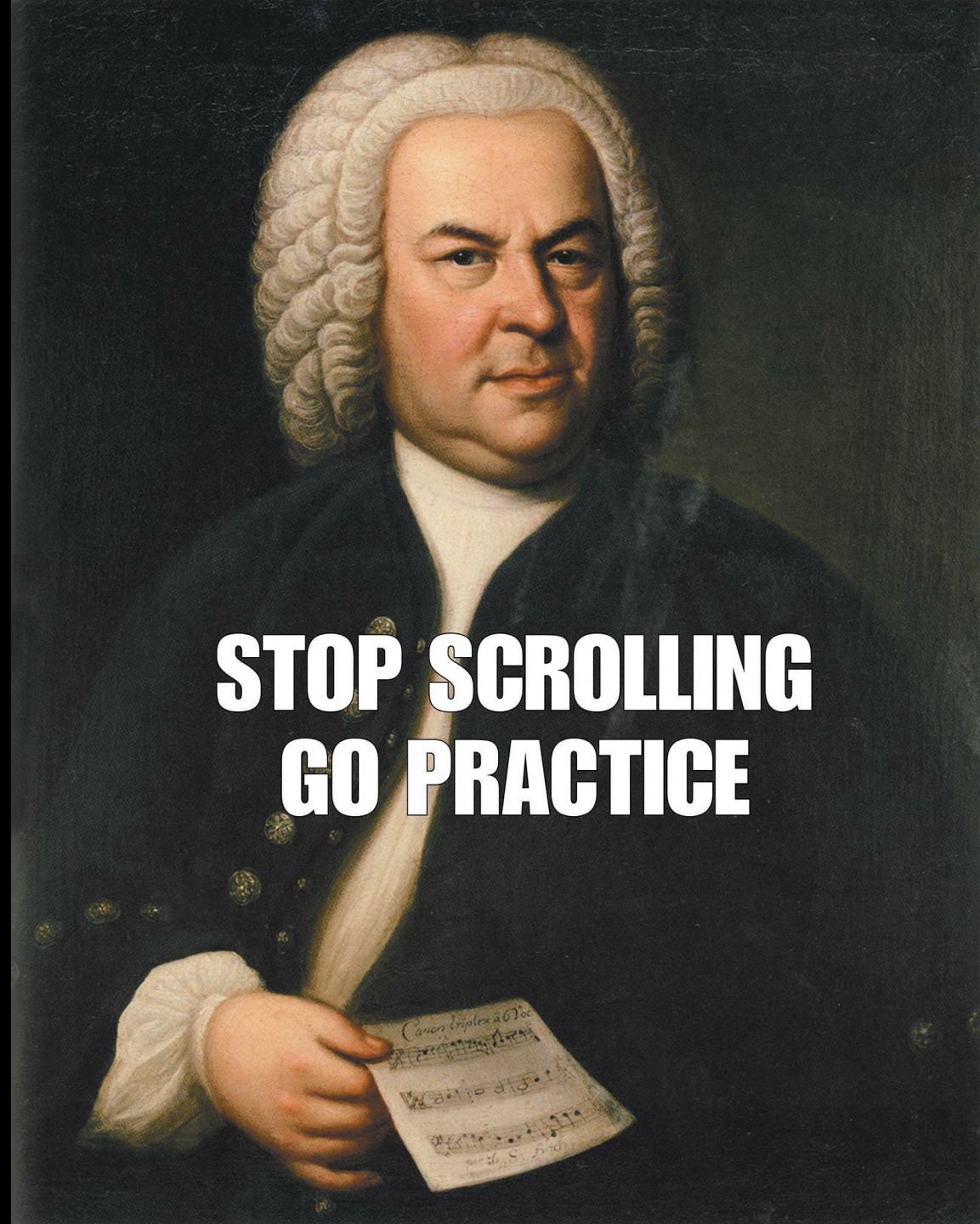
**ORGAN RECITALS**

**SAVING THE INSTRUMENT 17 PEOPLE AT A TIME**

imgflip.com

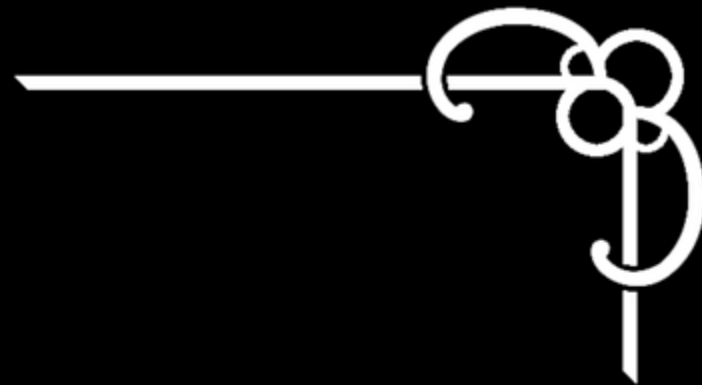
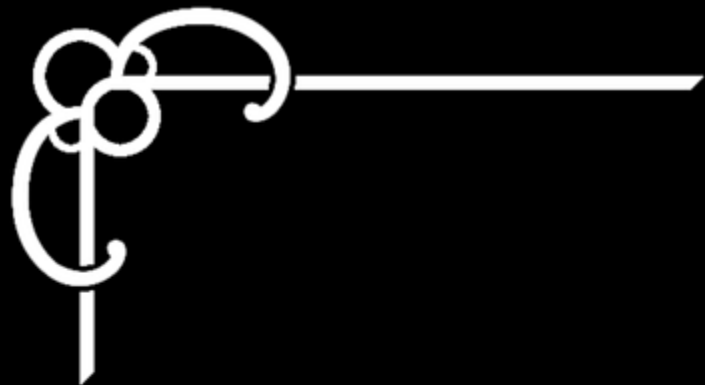
**ORGANISTS DON'T MAKE MISTAKES**

**WE DEVELOP VARIATIONS**



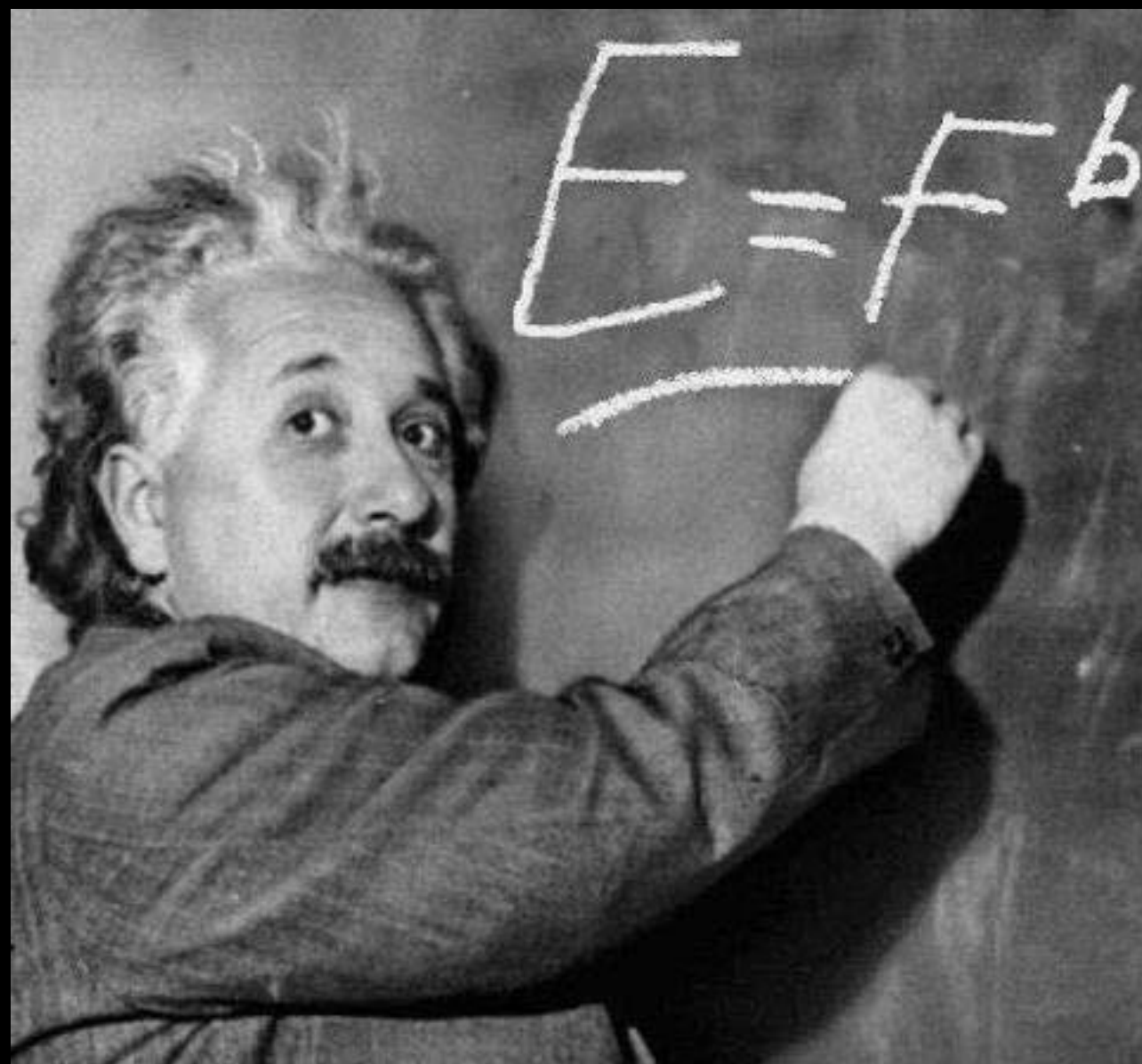
**STOP SCROLLING  
GO PRACTICE**





*It's not music theory,  
it's only rocket science!*





**One does not simply**

**write a Bach chorale**

memecreator.org



If 2020 were a key signature...





Robert Komaniecki

@Komaniecki\_R

As a music theorist, it's important to have excellent chord identification skills. Here's an example:

Op. 13. ←

Grave.

Chords

Not a chord

Not a chord

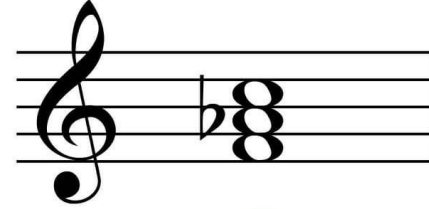
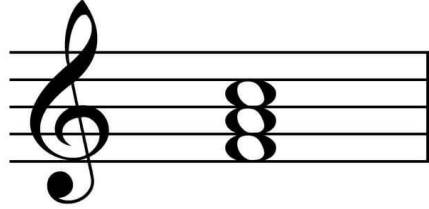
Chord

Chord

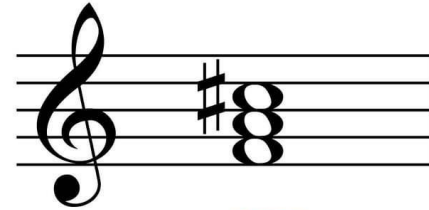
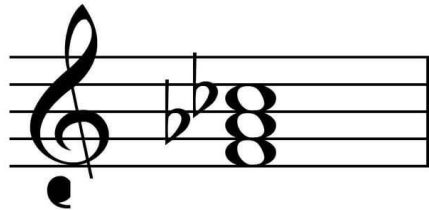
Chord

A musical score for a piece titled "Op. 13. Grave." in 2/4 time, featuring a treble and bass staff. The score includes several measures of music. Annotations with green arrows identify specific musical elements: "Chords" points to three measures in the treble staff; "Not a chord" points to a single note in the treble staff and a single note in the bass staff; "Chord" points to a single note in the bass staff and two notes in the bass staff. The score is marked with "Grave." and "Op. 13." and includes a "Chord" label at the bottom.

# Chord emojis



@BlitzBooks

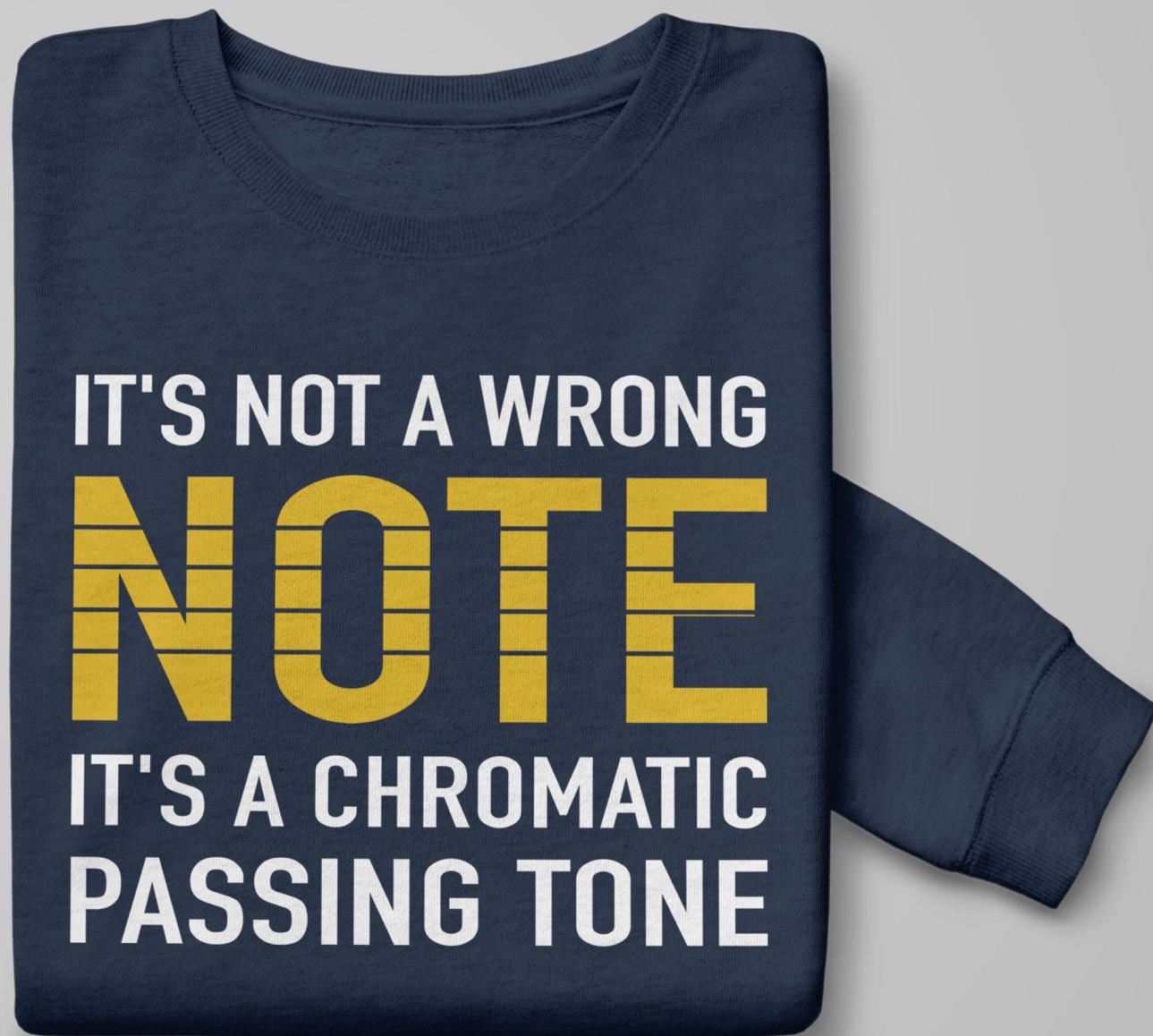




## STUDIES SHOW LISTENING TO MUSIC WHILE WORKING INCREASES PRODUCTIVITY

*unless*

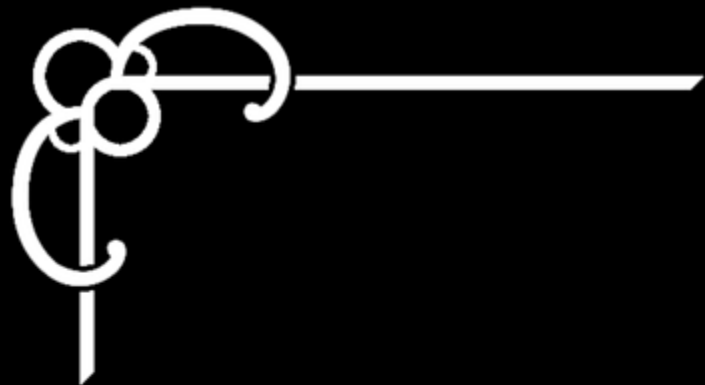
you are a musician, in which  
case you will be able to do  
absolutely nothing else but  
strictly analyze the music you  
are listening to down to the  
very last sixteenth note



IT'S NOT A WRONG

**NOTE**

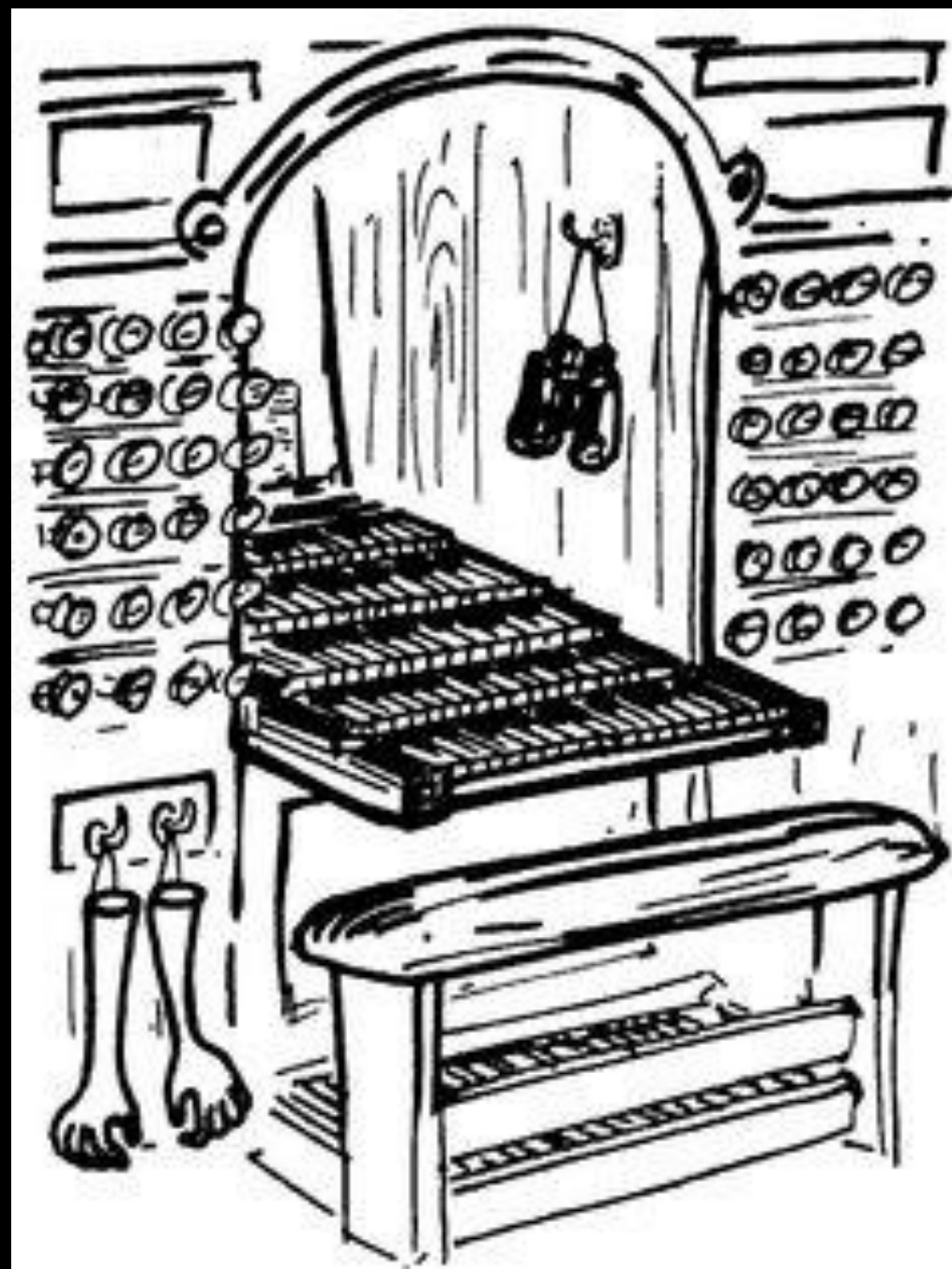
IT'S A CHROMATIC  
PASSING TONE



*If you get this,  
you might be an organist . . .*

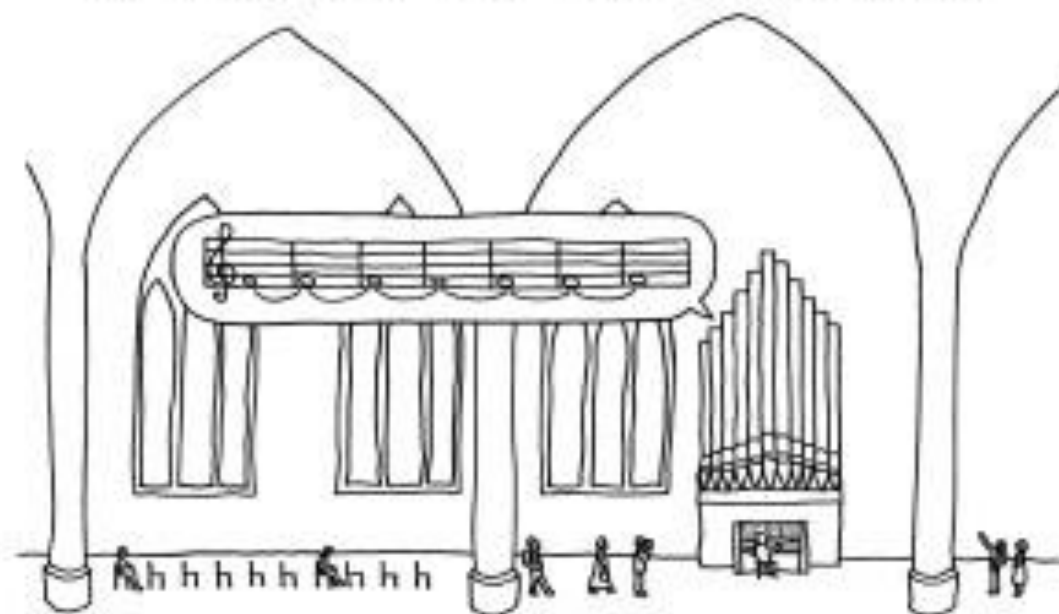






# ORGAN TUNING

THE ORGAN TUNER IS AT WORK IN THE CATHEDRAL



THE TOURISTS, THOUGH BAFFLED, WILL LOOK FOR  
THE COMPACT DISC IN THE GIFT SHOP

[CartoonChurch.com](http://CartoonChurch.com)



*"...and this is what he spent his  
lottery winnings on"*



**Can we stop and get some**



**?**

**Mom: We have**



**at home**

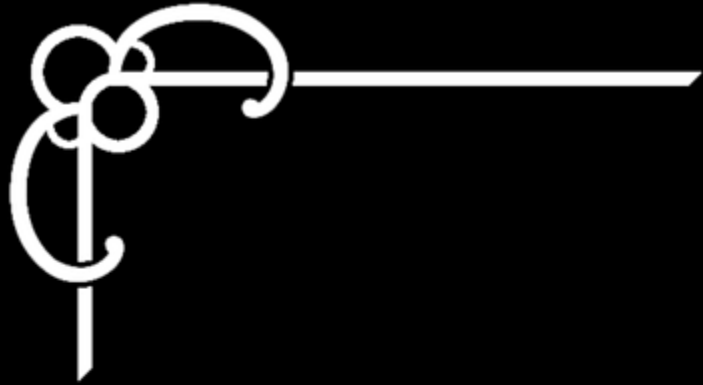
**at home:**



**OH, YOU USE BOTH HANDS TO  
PLAY YOUR INSTRUMENT?**



**YOU MUST BE REALLY  
COORDINATED**



*Just a Little Bit Random*









*"I'm gonna need even less tuba."*



Johann  
Sebastian  
BACH



Johann  
Sebastian  
FRONT



**Mozart**

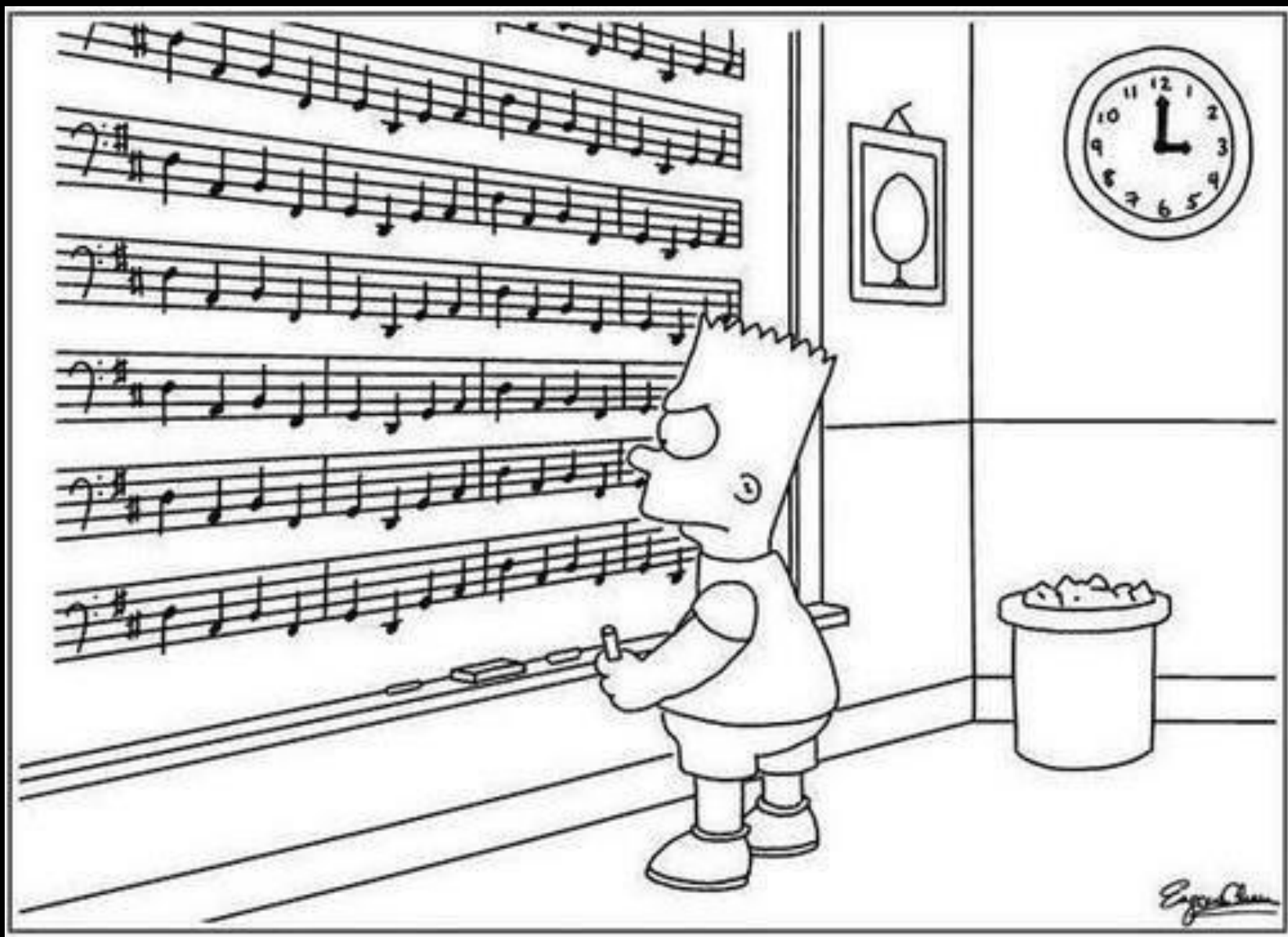


**Cinderella**



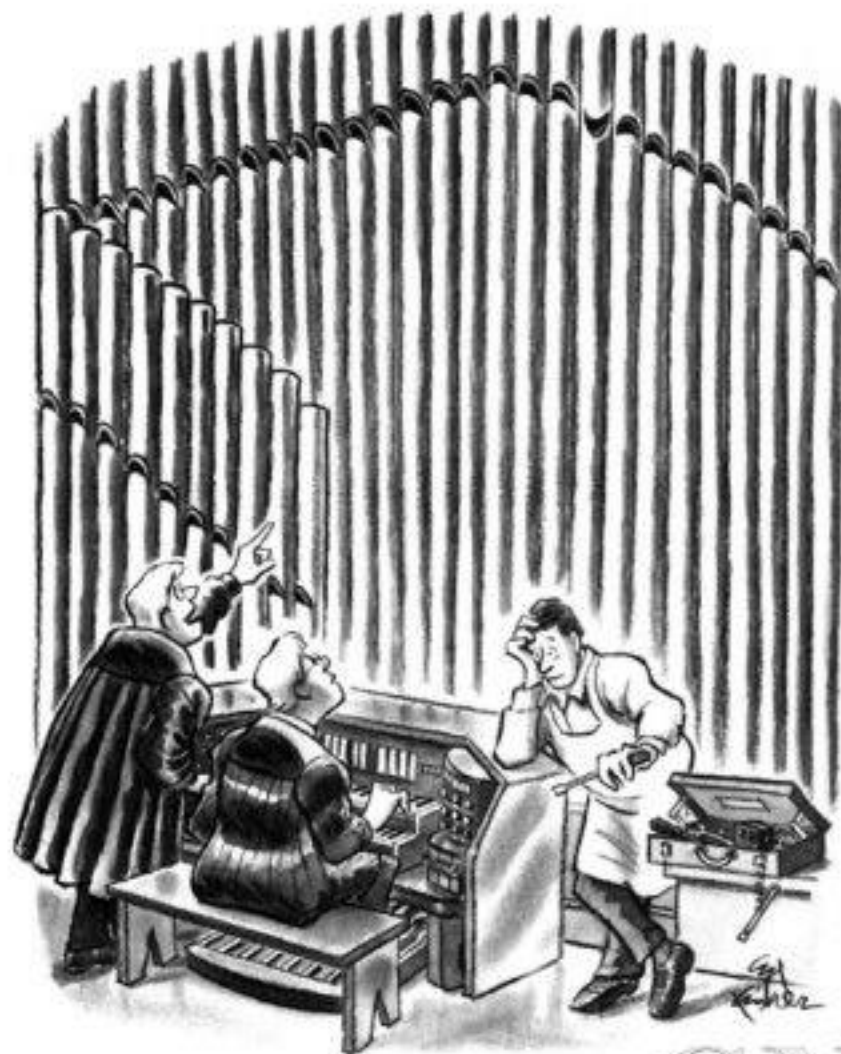








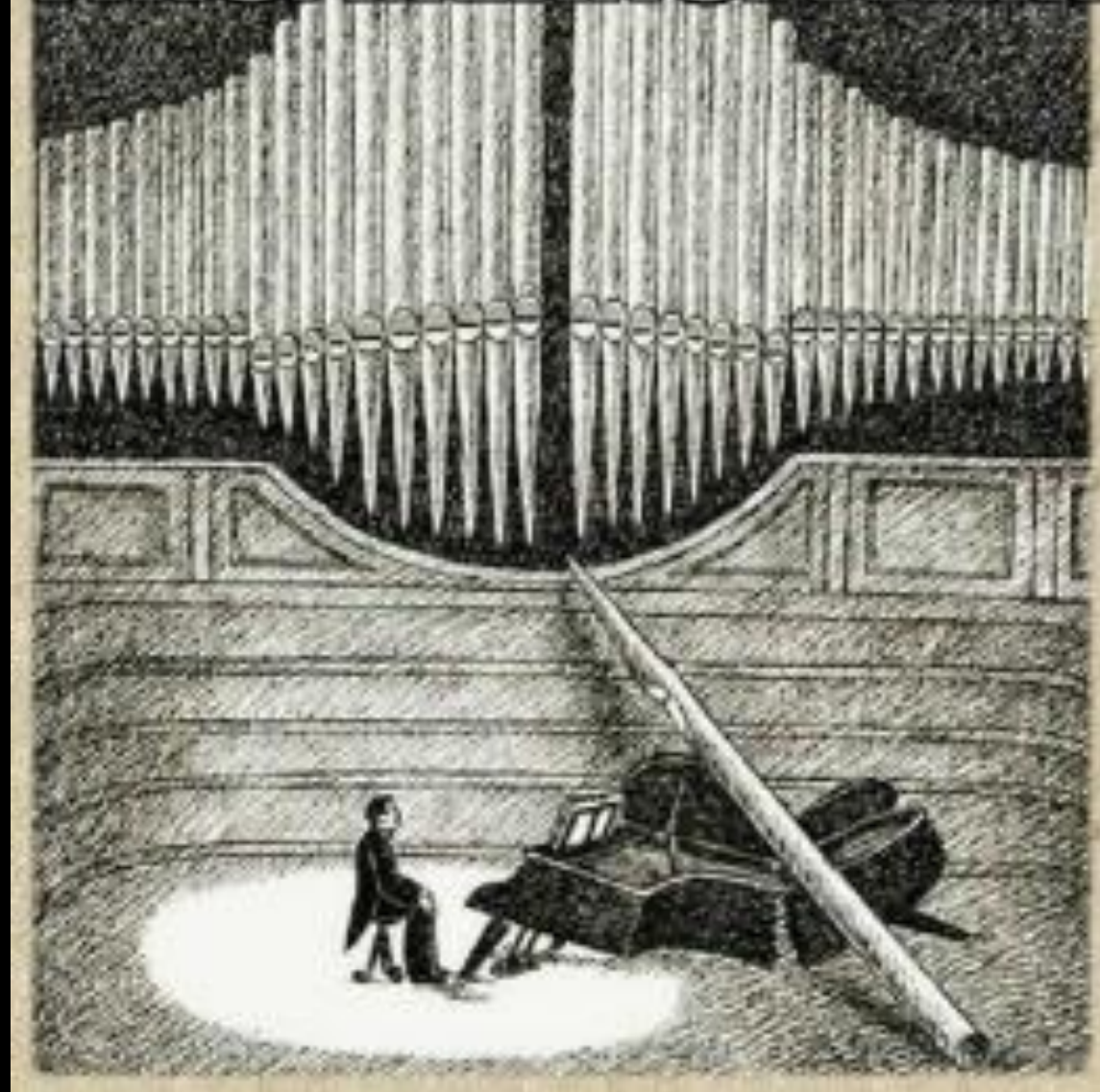
Suddenly, second-chair granite rock's jealousy of first-chair granite rock becomes uncontainable.



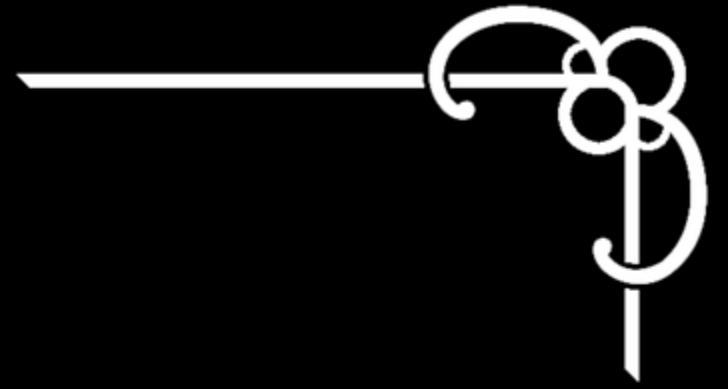
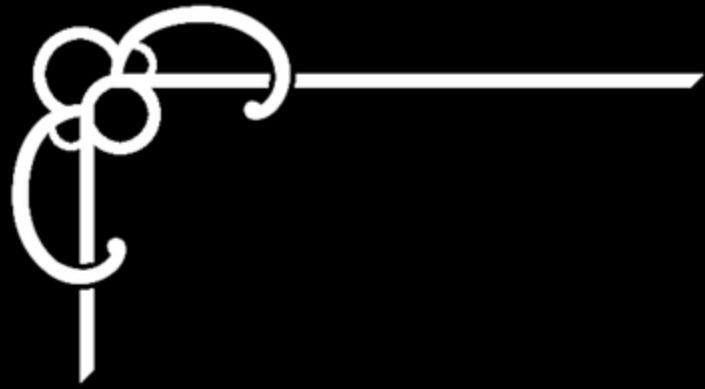
*"There! That's the one."*

CN  
COLLECTION

**THIS. MEANS. WAR.**







*And now . . . back to your  
regularly scheduled programming*

